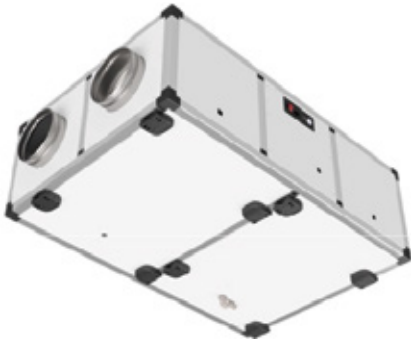


## TECHNICAL DATA SHEET



PRODUCT CODE	TYPE OF CONTROLLER	VERSION	DIMENSIONS (WxHxD) mm
701HR08H1EB0002	Smart EB	H1 horizontal, ceiling mounting	1462x411x967
701HR08H13E0000	Easy 3E		
701HR08B1EB1002	Smart EB	B1 horizontal, floor-standing, outdoor	1547x542x1164
701HR08B13E1000	Easy 3E		
701HR08V1EB0002	Smart EB	V1 vertical, floor-standing	1462x1067x411
701HR08V13E0000	Easy 3E		
701HR08V1EB1002	Smart EB	V1 vertical, floor-standing, outdoor	1550x1284x612
701HR08V13E1000	Easy 3E		

### TECHNICAL DATA

- Flow rate up to 950 m<sup>3</sup>/h, head up to 610 Pa
- Counterflow heat recovery unit, aluminium, with efficiency >90% (Erp-2018), Eurovent certified
- EC fans, centrifugal backward-curved blades, low consumption
- Low pressure drop filters: F7 (ePM1 70%) for fresh air and M5 (ePM10 50%) for extraction
- Aluminium profile and sandwich panel structure (pre-painted sheet metal outside, galvanised sheet metal inside)
- Rock wool thermal/acoustic insulation, 25 mm thick
- Nominal voltage: 230 V 1F 50-60 Hz Max. absorption: 2,9A 380W
- Overall dimensions excluding ducts and condensate drain (w x d x h): 1350x967x411 mm
- Nominal pipe diameter: Ø 250 mm
- Weight: 131 kg
- Integrated bypass for free-cooling / free-heating (manual, motorised or automatic operation)
- Horizontal or vertical configuration, air duct orientation can be changed on site
- Available with the following controls: 3-speed Easy 3E, electronic with white LCD display Smart EB
- Integrated frost protection
- Operating conditions: ambient temperature between 0 °C and 45 °C, humidity <80%
- Standard indoor installation with possibility of outdoor installation\*: fresh air temperature -7 °C\*\* to +40 °C

\* supplied with IP55 control panel and rain canopy; condensate drain insulation required.

\*\* for lower temperatures, the use of an antifreeze heater is recommended.

### AVAILABLE CONTROLLER



**Easy 3E** - Electronic control/connection board installed on board the machine; remote control with on/ off, speed selection from 3 preset speeds (speed calibration can be changed using trimmers on the board), opening/closing signalling (it is possible to modify the speed setting by acting on the trimmers on the board), by-pass opening/closing signalling (with automatic control), anti-blocking protection signalling. Closure by-pass signalling (with automatic control), frost protection signalling (with automatic control by reducing the fan speed). By reducing the speed of the inlet fan, dirty filters signalling (counting of operating hours) and hours of operation) and temperature probe failure. Possibility of controlling the unit through simple digital inputs (on-off and remote speed). The remote control can be installed inside a type 503 horizontal box. Possibility of (automatic) control of a possible antifreeze heater (even 2 stages).

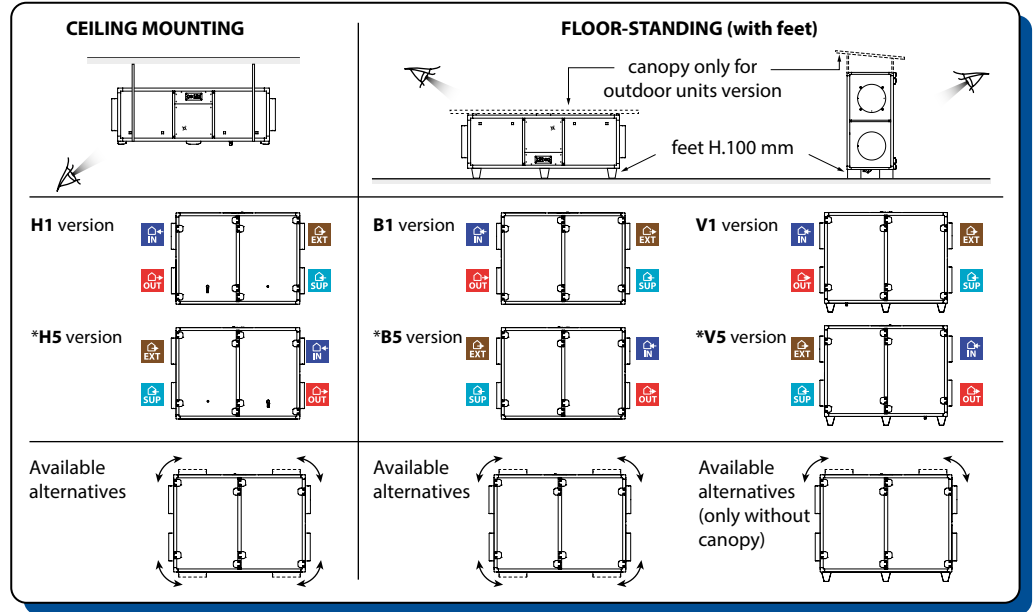


**Smart EB** - Electronic control/connection board installed on the machine, which can be combined with a thin white LCD display, with integrated humidity and ambient temperature probes (can be installed on a type 503 horizontal box); fan speed can be selected manually from 3 preset speeds (modifiable from 10% to 100%) or managed automatically by the control board (depending on humidity, air quality, temperature and/or other external probes); possibility of differentiating the speed of the inlet fan with respect to the exhaust fan; automatic control of the by-pass, with both free-cooling and free-heating functions; integrated frost protection with reduction in the speed of the inlet fan or, if present, with an anti-freeze resistor; automatic management of any post-treatment batteries/resistors (both with on/off and 0-10V valves); display of any active alarms and alarm history; filter clogging alarm both with counting of operating hours and with differential pressure switches; hourly/weekly programming. Possibility of controlling the control board with simple digital inputs (remote on/off contacts, speed, summer/winter...) and of combining it with external 0-10V probes (CO2/air quality, humidity, temperature, constant flow rate/pressure control...); ModBus on RS485 for connection to external controllers/supervisors; provision for expansion modules (LAN, RS485, RS232, GSM...), available in the future.

# TECHNICAL DATA SHEET

## POSSIBLE CONFIGURATIONS

-  FRESH AIR INLET
-  EXHAUST AIR
-  STALE AIR EXTRACTION
-  SUPPLY AIR



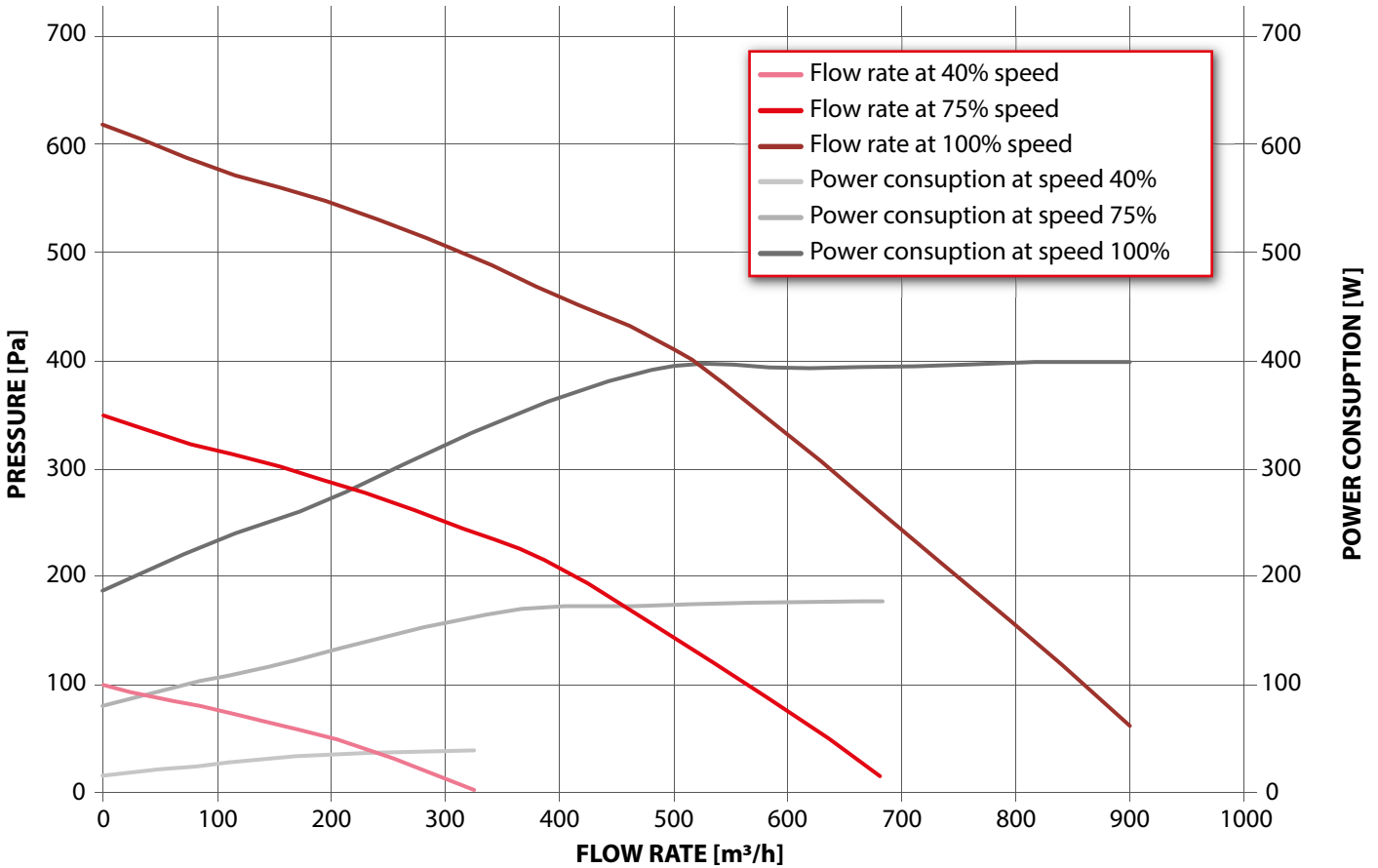
\* Versions **H5**, **B5** and **V5** only on order.

## NOISE

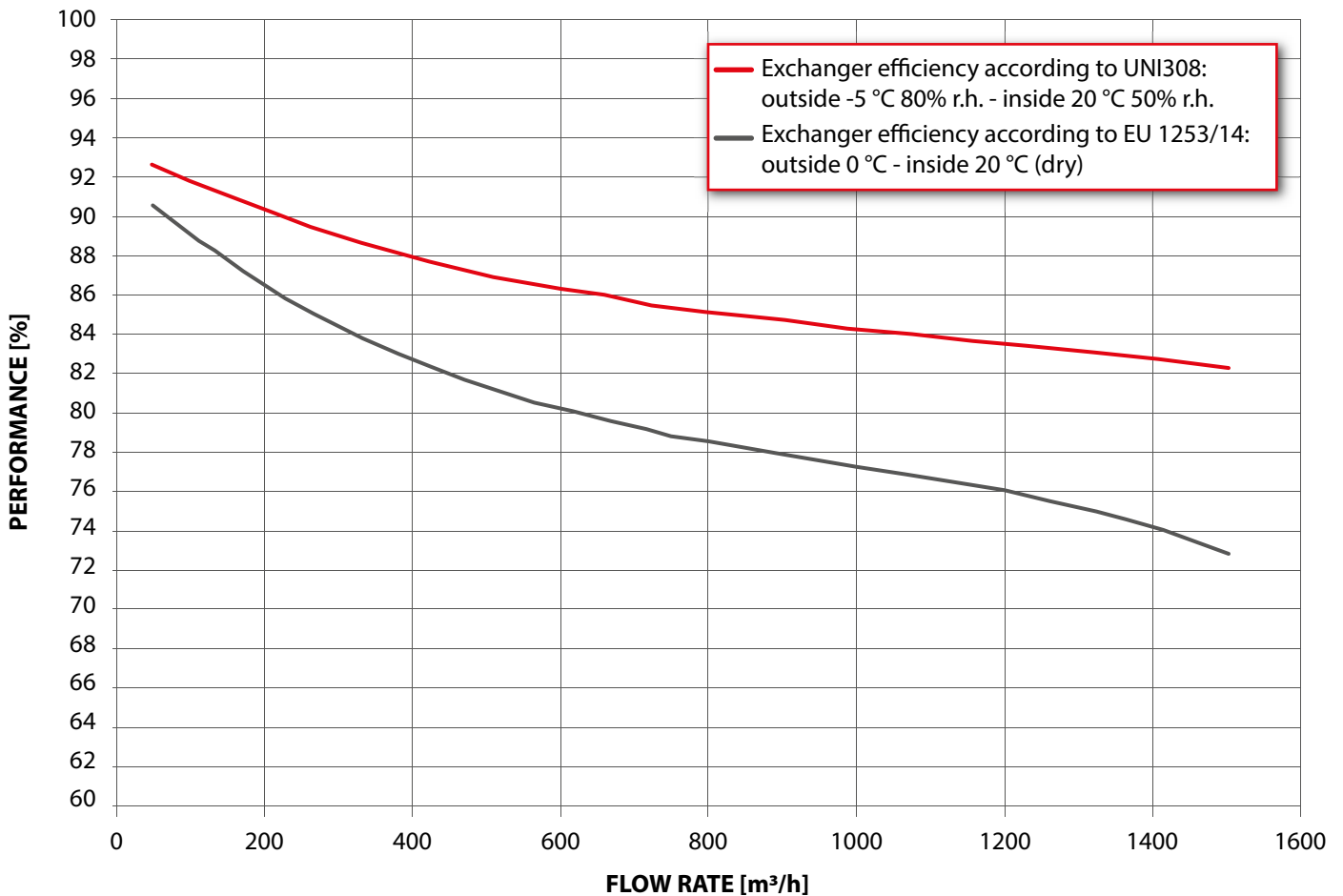
FAN SPEED	FAN FLOW RATE (m³/h)	NOISE RADIATED BY THE BOX (dB)									NOISE TRANSMITTED TO AIR DUCTS (outside air) (dB)								
		L <sub>w</sub> dB (A)	63 Hz	125 Hz	250 Hz	500 Hz	1000 Hz	2000 Hz	4000 Hz	8000 Hz	L <sub>w</sub> dB (A)	63 Hz	125 Hz	250 Hz	500 Hz	1000 Hz	2000 Hz	4000 Hz	8000 Hz
40%	347	42	45	44	40	37	37	35	33	28	47	50	49	45	42	42	39	37	32
40%	302	44	44	44	43	41	39	36	34	29	49	49	49	48	45	43	41	38	33
40%	256	46	43	44	45	44	40	37	35	30	51	48	49	51	49	45	42	39	34
40%	209	48	41	44	48	47	42	39	36	31	53	46	49	54	53	47	43	40	34
40%	166	48	42	44	49	47	43	39	36	31	54	46	50	55	52	48	44	40	35
40%	120	49	42	45	50	46	43	39	36	32	54	47	50	56	52	48	44	41	36
40%	59	49	42	46	52	46	44	40	37	33	55	47	51	58	52	49	45	42	37
40%	0	50	43	47	53	46	45	41	38	34	56	48	52	60	52	50	46	43	38
75%	752	54	54	53	51	49	48	47	46	42	60	60	59	57	54	54	53	51	47
75%	678	53	54	54	50	48	48	46	44	40	59	61	60	56	54	54	52	50	45
75%	603	53	55	54	50	48	47	45	43	39	58	61	61	56	53	53	51	48	43
75%	526	54	54	54	53	51	49	47	44	40	60	60	61	59	57	55	52	50	44
75%	449	56	53	54	56	54	51	48	45	40	63	59	61	62	61	57	53	51	45
75%	371	59	52	54	59	58	53	49	46	41	65	58	61	66	64	59	55	52	46
75%	297	59	52	55	60	58	53	50	47	42	66	58	62	67	64	59	56	52	47
75%	218	60	53	56	61	58	54	50	48	43	66	59	63	68	64	60	56	53	48
75%	109	61	54	57	63	58	55	52	49	44	67	60	64	70	64	62	58	54	50
75%	0	62	55	58	65	58	56	53	50	46	69	61	65	73	65	63	59	55	51
100%	1000	59	59	58	56	54	54	52	51	47	65	66	65	62	60	60	59	57	52
100%	960	59	59	58	56	54	53	52	50	46	65	66	65	62	60	60	58	56	52
100%	880	58	60	59	56	53	53	51	49	45	64	67	66	62	59	59	57	55	50
100%	800	58	60	60	56	53	53	51	49	44	64	67	67	62	59	59	57	54	49
100%	699	60	59	60	58	56	54	52	50	45	66	66	67	65	63	61	58	55	50
100%	599	62	58	60	61	60	56	53	51	46	68	65	67	68	67	63	59	57	51
100%	498	64	57	60	64	63	58	54	52	47	71	64	67	72	70	65	61	58	52
100%	401	65	58	61	65	63	59	55	52	48	72	65	68	73	70	66	62	59	53
100%	298	66	59	62	67	63	60	56	53	49	73	65	69	75	71	67	63	60	55
100%	150	67	60	63	69	63	61	57	54	50	74	67	70	77	71	68	64	61	56
100%	0	68	61	64	71	64	62	59	56	52	76	68	72	80	71	70	66	62	58

# TECHNICAL DATA SHEET

## AERAUIC PERFORMANCES

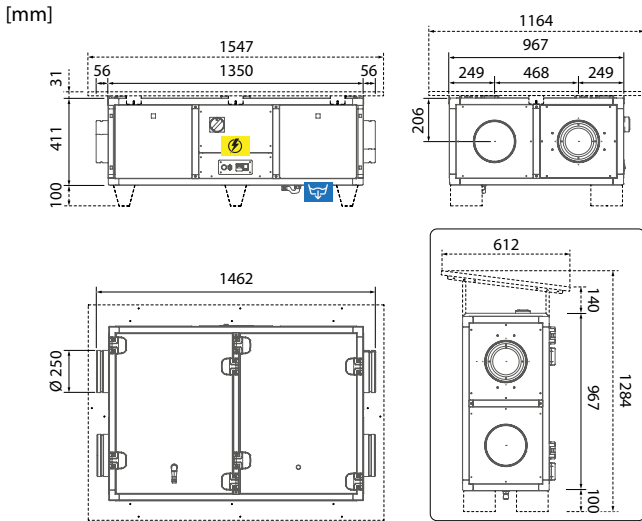


## EXCHANGER THERMAL EFFICIENCY



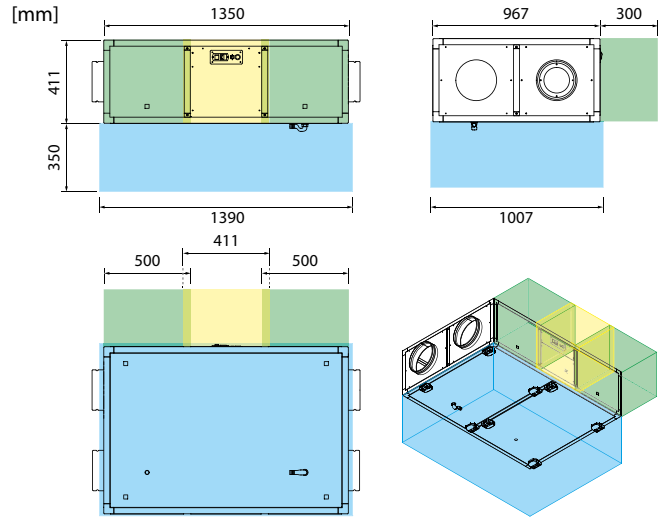
# TECHNICAL DATA SHEET

## DIMENSIONS



- Wiring box
- Condensation drain
- Aeraulic connections Ø 200 mm
- Condensate drain Ø 20 mm

## SPACE ALLOWANCES FOR MAINTENANCE/INSPECTION



- Unit inspection / exchanger and filter maintenance
- Inspection/maintenance of wiring box
- Filter inspection

## PRODUCT SHEET

According to Regulations (EU) No. 1253/2014 and No. 1254/2014 - Data referring to maximum nominal flow rate (for other operating points check the aeraulic performance graph).

Supplier's brand	RDZ S.p.A.	
Model identifier	HR 90 800	
Type of product	UVNR, bidirectional	
Type of motorisation	Variable speed	
Heat recovery system	Countercurrent recuperator	
Heat recovery system thermal efficiency*	78,3%	
Nominal flow rate (m <sup>3</sup> /s)	0,234 m <sup>3</sup> /s	
Effective electric power input (kW)	0,399 kW	
Specific internal ventilation power SFPint (W/(m <sup>3</sup> /s)*	1212 W/(m <sup>3</sup> /s)	
Frontal speed at nominal flow rate (m/s)*	1,90 m/s	
Nominal outside pressure Δps,ext (Pa)	109 Pa	
Internal pressure drop of ventilation components Δps,int (Pa)*	294 Pa	
Fan static efficiency ηs,Fan**	50,1%	
Drawing rate (%)	inside	6,0%
	external	5,3%
	recirculation	not applicable
Filter classification	Renewal: F7 (ePM1 70%) Revival: M5 (ePM10 50%)	
Location and description of visual signal filter warning signal	Version 3E: signalling LED on remote control	
	Lcd EB version: Alarm shown on remote display	
Sound power level (Lwa in dB(A))*	58 dB(A)	
Internet address with pre-assembly and disassembly instructions	www.rdz.it	

\* as per EU Regulation n° 1253/2014

\*\* calculated in accordance with EU Regulation No.327/2011



RDZ S.p.A. 🏠 V.le Trento, 101 - 33077 SACILE (PN) - Italy  
 ☎ Tel. +39 0434.787511 📠 Fax +39 0434.787522  
 ✉ info@rdz.it 🌐 www.rdz.it

FAC0CB031BZ.01 05/2024

COMPANY WITH  
 QUALITY SYSTEM  
 CERTIFIED BY DNV  
 ISO 9001

